

- NOTES**
1. EASEMENTS DESIGNATED AS "PUBLIC UTILITY EASEMENT" ARE VESTED IN N.B. FURBER AND N.B. TEL. PURSUANT TO REGULATION 84-117, SECTION 5, UNDER THE COMMUNITY PLANNING ACT.
 2. THE LOT AREAS PUBLISHED ARE FOR UPLAND ONLY. THE EXACT LOCATION OF THE SOUTHERLY BOUNDS OF THE LOTS IS APPROXIMATE. THE INTENTION IS TO CONVEY TO THE SOUTHERLY BOUNDARY.

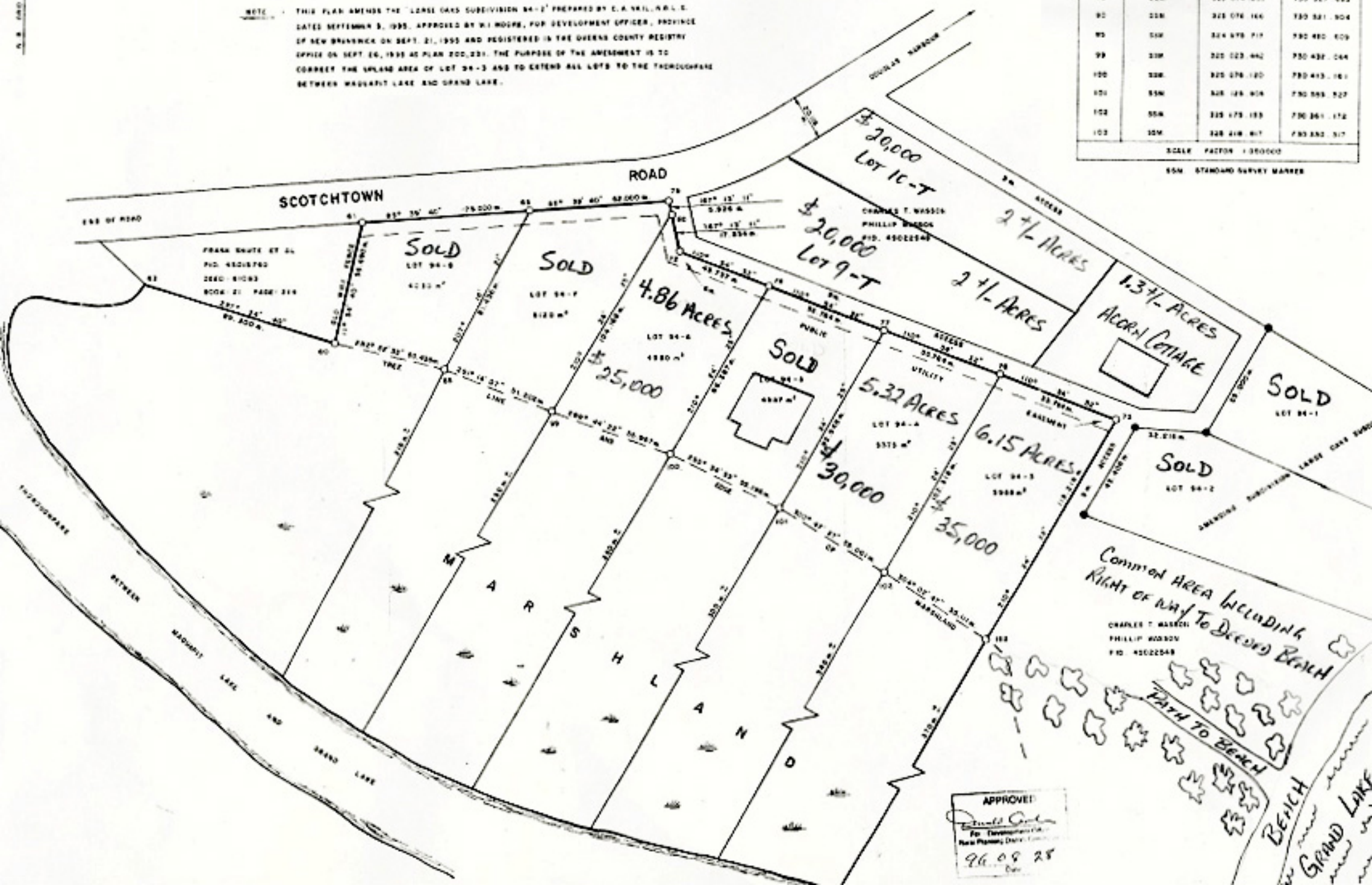
200,331
 Sept 4/196

NOTE THIS PLAN AMENDS THE "LARGE OAKS SUBDIVISION 84-2" PREPARED BY C.A. YAIL, A.R.C.E. DATED SEPTEMBER 3, 1955, APPROVED BY W.I. MOORE, FOR DEVELOPMENT OFFICER, PROVINCE OF NEW BRUNSWICK ON SEPT. 21, 1955 AND REGISTERED IN THE OPENED COUNTY REGISTRY OFFICE ON SEPT. 26, 1955 AS PLAN 200,231. THE PURPOSE OF THE AMENDMENT IS TO CORRECT THE UPLAND AREA OF LOT 84-3 AND TO EXTEND ALL LOTS TO THE TROUSERSFARM BETWEEN WAGHMIT LAKE AND GRAND LAKE.

82	35M	324 858 587	730 461 843
83	30M	324 851 858	730 468 372
85	23M	325 018 012	730 522 292
72	55M	325 080 030	730 555 000
73	55M	325 277 134	730 429 587
70	55M	325 225 041	730 449 588
77	55M	325 172 340	730 489 430
76	22M	325 120 857	730 489 591
75	55M	325 074 855	730 527 683
80	22M	325 076 166	730 521 504
80	55M	324 978 717	730 480 109
99	22M	325 023 442	730 437 244
100	22M	325 076 120	730 413 161
101	55M	325 128 504	730 555 527
102	55M	325 178 183	730 561 172
103	22M	325 218 817	730 582 517

SCALE FACTOR 1:30000
 55M STANDARD SURVEY MARKER

N. B. FURBER



APPROVED:
 [Signature]
 For Development Officer
 New Planning Division
 96.09.25